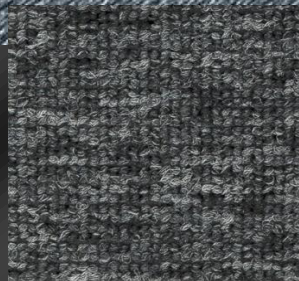
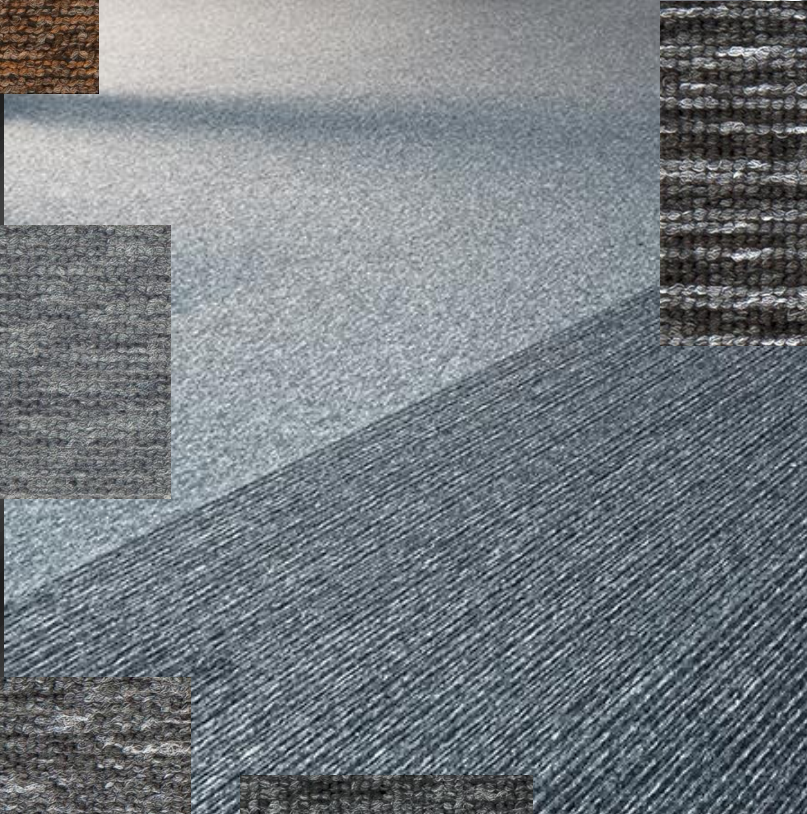
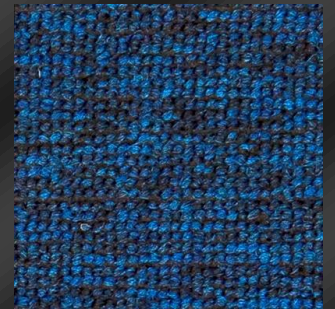
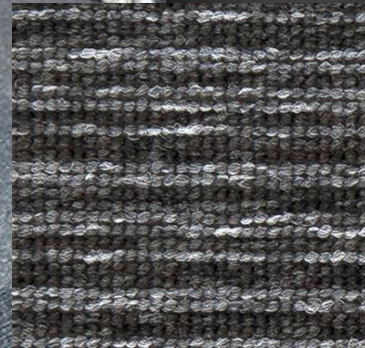
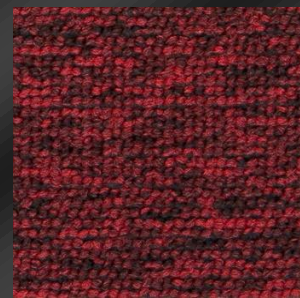


**MULTI**CONTRACT

*Kingston plaatvaip*



Product definition		: tufted loop pile
Gauge		: 1/10"
No. of tufts	ISO 1763	: ± 164 000/m <sup>2</sup>
Pile fibre		: 100% solution dyed polyamide
Pile weight		: 550 g/m <sup>2</sup> ± 5%
Pile height	ISO 1766	: 3,5 mm ± 5%
Primary backing		: PA/PES non-woven - Colback
Tile backing		: Polyflex
Total thickness	ISO 1765	: 6,8 mm ± 5%
Total weight		: 4 300 g/m <sup>2</sup> ± 7,5%
Tile size		: 50 x 50 cm / 100 x 25 cm / 100 x 50 cm : 100 x 100 cm / 100 x 200 cm

### PERFORMANCE

Use classification		: Class 33
Castor chair test	EN 985	: A, continues use
Abrasion	EN 1963	: pass
Vettermann test	ISO 10361 / EN 1471	: pass
Thermal isolation	ISO 8302	: 0,08 m <sup>2</sup> K/W
Dimensional stability	EN 986	: pass
Sound absorption	ISO 140-8	: 24 dB
Luxery / Comfort	EN 1307	classe 1

### ELECTROSTATIC PROPERTIES

Walk on test	ISO 6356	: -0,1 kV
Horizontal electrical resistance	ISO CD 10965	: 3x10 <sup>8</sup> Ω
Vertical electrical resistance	ISO CD 10965	: 4x10 <sup>10</sup> Ω
Static loading		: anti-static

### FLAME PROPERTIES

Reaction to fire	EN ISO 11925-2	
	EN ISO 9239-1	: Bfl - s1
Hot metal nut test	BS 4790	: Low Radius

### COLOUR FASTNESS PROPERTIES

Light	ISO 105 B02	: > 5.0
Rubbing, dry	ISO 105 X12	: 5.0
Rubbing, wet	ISO 105 X12	: 5.0
Shampoo	BS 1006	: 5.0
Water	ISO 105 E01	: 4.5
Water stains	TNO W 6024	: 5.0

